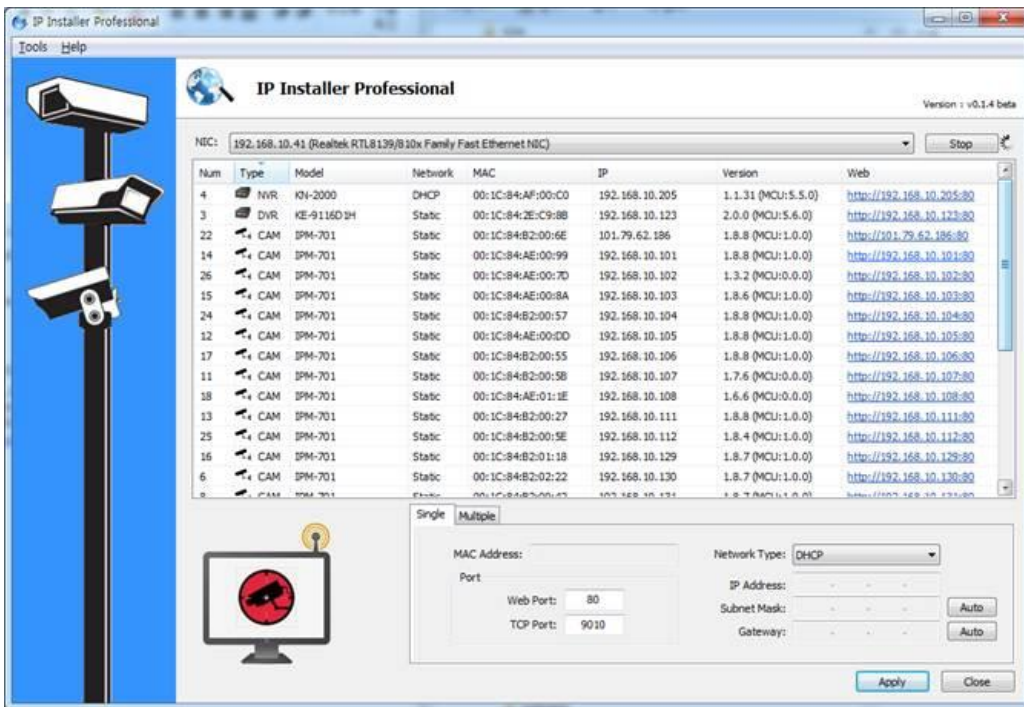
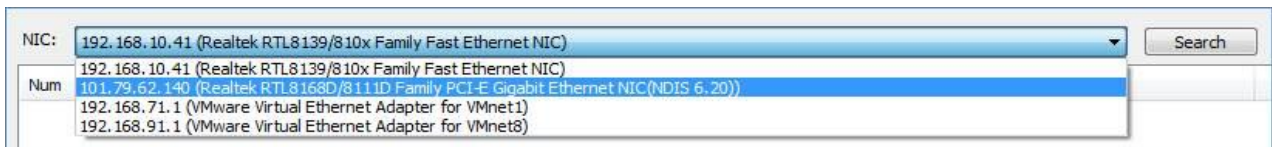


IP Installer Professional

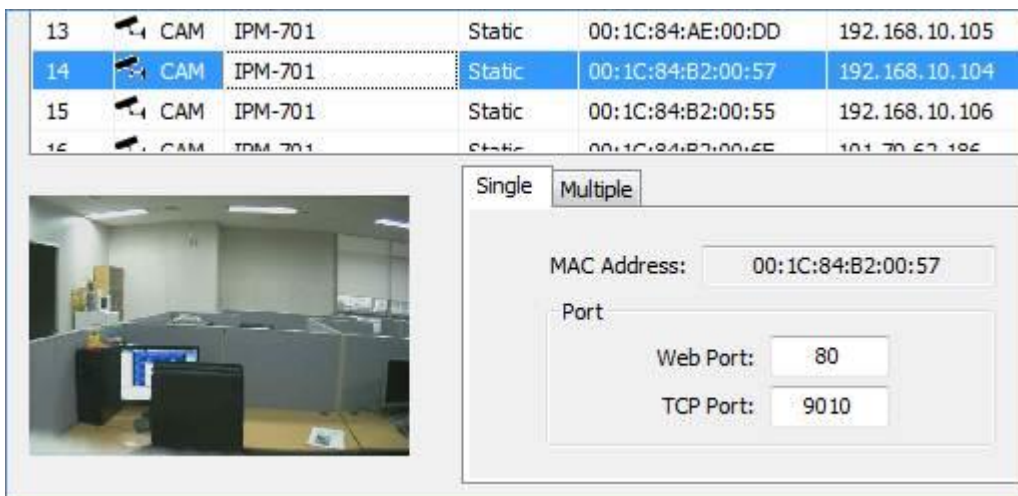
1. IP Installer Professional .



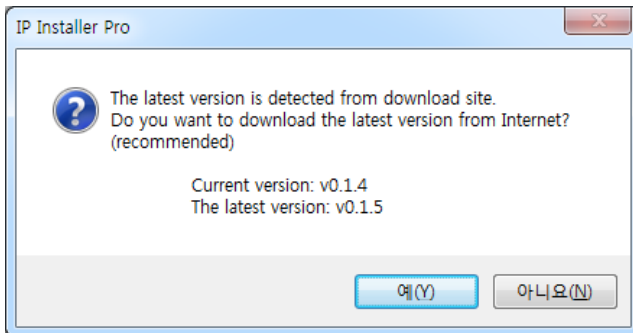
1) Support multi network card.



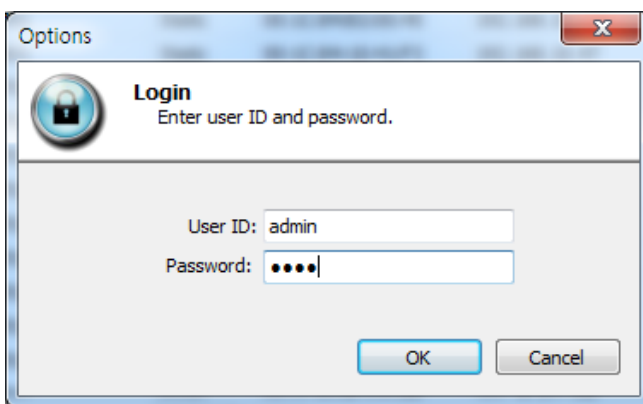
2) Support snapshot image for IP camera at every 5 seconds.



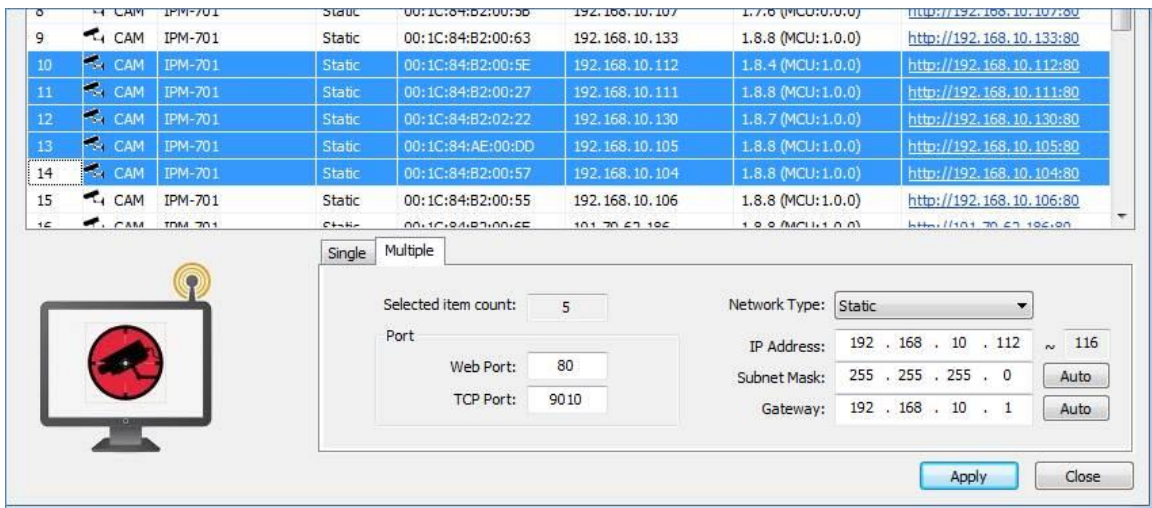
3) Support automatic update. - If new version will be released, it would be automatically detected and upgrade.



4) Support one time input of ID and Password when needed.



5) Support not only single device' s network setting but also multiple devices network setting.



6) Support sorting function.

Num	Type	Model	Network	MAC	IP	Version	Web
6	CAM	IPM-601	Static	00:1C:84:10:41:F3	192.168.10.47	1.8.12 (MCU:1.0.0)	http://192.168.10.47:80
23	CAM	IPM-701(2.1M HD)	Static	00:1C:84:10:5D:BC	192.168.10.49	1.8.12 (MCU:1.0.0)	http://192.168.10.49:80

7) Support automatic setting to subnet mask and gateway.

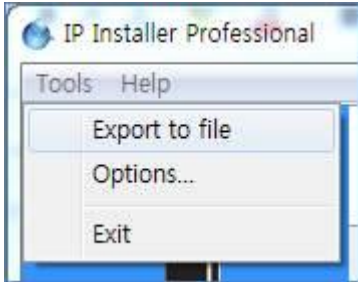
Network Type: Static

IP Address: 192 . 168 . 10 . 104

Subnet Mask: 255 . 255 . 255 . 0 Auto

Gateway: 192 . 168 . 10 . 1 Auto

8) Support file exporting function.



9) Support direct link to website of device.

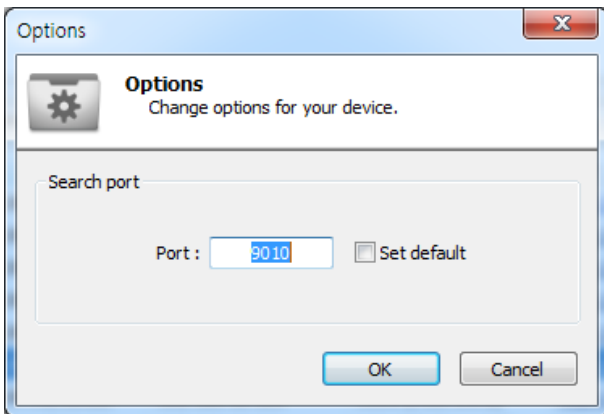
Web

<http://192.168.10.123:80>

<http://192.168.10.205:80>

<http://192.168.10.140:80>

10) Support changing of search port without restart.



11) If you change IP setting to device, it will be changed to red colored text during 10 seconds when the device's IP is applied.

ID	Device	Model	Network Type	MAC Address	IP Address	Firmware	Web URL
6	CAM	IPM-601	Static	00:1C:84:10:41:F3	192.168.10.47	1.8.12 (MCU:1.0.0)	http://192.168.10.47:80
18	CAM	IPM-701(1.3M HD)	Static	00:1C:84:AE:01:19	192.168.10.48	1.8.12 (MCU:1.0.0)	http://192.168.10.48:80
23	CAM	IPM-701(2.1M HD)	Static	00:1C:84:10:5D:BC	192.168.10.149	1.8.12 (MCU:1.0.0)	http://192.168.10.149:80